

# HIT-NOT<sup>®</sup>

## PROXIMITY DETECTION

2024 CATALOG

# TABLE OF CONTENTS

<b>Magnetic Field Generator Systems</b>	
Part #: DDAC-PDS-SYS	2
Part #: DDAC-PDS-C-SYS	4
Part #: DDAC-PDS-SXL-SYS	6
Part #: DDAC-PDS-SXL-C-SYS	7
<b>Personal Alarm Devices (PAD's) and PAD Accessory's</b>	8
<b>Remote Event Monitoring (REM) DATA</b>	11
<b>Area Controllers and Accessories</b>	12
<b>Silent Zones</b>	14
<b>DDAC Individual Parts</b>	16
<b>XL Individual Parts</b>	17
<b>Type A Individual Parts (Previous Generation)</b>	18

# THE HIT-NOT® PROXIMITY DETECTION SYSTEM

Today's work environments need advanced ways to protect pedestrians from accidents involving moving vehicles or mobile equipment, to prevent machines from colliding with each other, and to keep pedestrians and machinery away from dangerous areas.

**HIT-NOT®** has led the way in the development of proximity detection systems. Its Patented Technology was originally developed for harsh and dangerous conditions of the underground mining industry, where it has been saving lives and preventing injuries for years.

This unmatched technology has now been engineered for use in other industries that use mobile equipment; such as warehouses, manufacturing, ports, and others where equipment and pedestrians work in close proximity. **HIT-NOT®** detects and warns through walls, racks, containers and other blind corner obstructions with a audible and visual alarm to both the equipment driver and the pedestrian.

*The essential, basic performance requirements for a proximity safety system in an industrial setting are:*

1. ESTABLISH PRECISE BOUNDARIES BETWEEN SAFE AND UNSAFE ZONES
2. RELIABLY WARN BOTH PEDESTRIANS AND OPERATORS OF POTENTIAL DANGERS
3. PROVIDE MEANS TO SIGNAL A VEHICLE OPERATOR TO SLOW DOWN OR STOP
4. ELIMINATE NUISANCE ALARMS
5. COMPACT PACKAGING FOR EASY INTEGRATION
6. PROVIDE ADDITIONAL ACCESSORY DEVICES FOR SOLVING UNIQUE OPERATIONAL ISSUES

## SYSTEM SUMMARY

The Basic **HIT-NOT®** System for pedestrian detection consists of a Magnetic Field Generator (MFG) that mounts on a moving vehicle and creates a 360° magnetic field, plus a Personal Alarm Device (PAD) worn by pedestrians that detects the magnetic field and warns both the vehicle operator and the pedestrian at the same time. Accessory devices are available with specific performance functions to expand system capabilities. These functions can include pedestrian crossing alerts, access control, structure collision alerts, also available is collision avoidance and more. The following pages provide details for the **HIT-NOT®** family of components.



## SYSTEM USE GUIDE



Vehicle to  
Pedestrian



Vehicle to  
Vehicle



Vehicle to  
Facility

## PART #: DDAC-PDS-SYS

*Adjustable Magnetic Fields Settings; WZ 16-43 ft and DZ 13-30 ft*

System consists of:

- A. MAGNETIC FIELD GENERATOR (DDAC-PDS-2)
- B. WARNING MODULE (DDAC-WM-LS)
- C. CAB SILENCER (DDAC-CAB-SI)

### TYPICAL USAGE



### MAGNETIC FIELD GENERATOR (DDAC-PDS-2)



#### SPECIFICATIONS

**Magnetic Field Frequency:**  
73kHz

**Radio Frequency Link:**  
916 MHz

**Voltage Input Range:**  
12-15V

**Range:**  
WZ 16-43 ft , DZ 13-30 ft  
WZ 4.88-13.11m, DZ 3.96-9.14m

**Magnetic Field Duty Cycle:**  
3%

**Current Consumption:**  
<0.3 AMP Average, 15 AMP Peak

**Power Indicator:**  
Blue LED on Housing

**Detection Indicator:**  
Orange LED on Housing

**Signal Input:**  
Available on Request

**Discrete Outputs:**  
Available on Request

**IP Rating:**  
IP66

**Operating Temperature:**  
-40F to +140F

**Power/Data Connector:**  
Deutsch DT06-8P

**Weight:**

### WARNING MODULE (DDAC-WM-LS)



#### SPECIFICATIONS

**Indicators:**  
Integrated Red LED/103dB Sounder

**Connector:**  
Deutsch DT06-8S

**Weight:**  
4.7oz/133g

**Dimensions:**  
3.81" x 2.92" x 1.03"

**Cable Conductors:**  
8 18AWG

**Cable Length:**  
10' WM to Machine / 8' WM to MFG

**Operating Temperature:**  
-40F to +140F

3.8lbs/1.7kg

**Bluetooth I**  
RN4020

**Dimensions (Without Mount):**  
4.5" x 9" x 3.25"

**FCC ID:**  
QUI-DDAC-PDS-GEN2

**Industry Canada Cert:**  
11625A-DDACPDSEGEN2

### CAB SILENCER (DDAC-CAB-SI)



#### SPECIFICATIONS

**Magnetic Field Frequency:**  
73kHz

**Voltage Input :**  
12-15V

**Range:**  
12" - 45"

**Power Indication:**  
Orange LED visible through end cap

**Cable:**  
8' 2 conductor

**Weight:**  
0.2lbs/0.09kg

**Dimensions:**  
6" x 1" x 1"

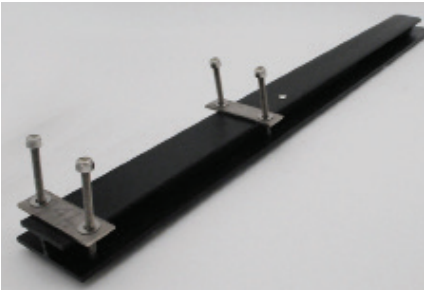
**CE:**  
CE Option Available

**Operating Temperature:**  
-40F to +140F

**Mount:**  
Velcro pouch included

*Adjustable Magnetic Fields  
Settings; WZ 16-43 ft and  
DZ 13-30 ft*

*Facilities outfitted prior to  
2018 or using HN-MFG-XL  
add "-A" to PN*



## STANDARD MOUNT : MOUNTING BAR (PART # HN-MAUB)

Install the Mounting Bar with the Generator positioned over the counterbalance weight (as pictured). Use the U-Bolts that are provided to secure the Bar to the overhead guard.

*See Install Guide for Additional Details*

## OPTIONAL HARDWARE IF REQUIRED

### WARNING MODULE LIGHT

Add a second Light Only Warning Module TO any DDAC System. The DDAC Cable (DDAC-Y-WMLO) is included

- Warning Module Light Only (Part # DDAC-WM-LO)

*See Install Guide for Additional Details*

### WEATHER SHIELDS

Weather Shields can be added to any of the Mounting Configurations. For Forklifts that Operate Outdoor or Wet in Conditions.

- Weather Shield Part # (DDAC-WS)

*See Install Guide for Additional Details*

### ALTERNATE MOUNTING OPTIONS

Install the Generator on top of the overhead guard. Use the U-Bolts that are provided to secure the Generator to the overhead guard.

- Top Mount (Part # HN-TP-MNT)

Install the Generator on front post of the canopy. Use the U-Bolts to secure the Generator to the frame.

- Front Mount (Part # HN-FT-MNT)

*See Install Guide for Additional Details*

### EMERGENCY BRAKE SWITCH OPTION

A Mechanical Brake Switch turns the DDAC-PDS-SYS Off/On when the Mechanical Emergency Brake is Engaged or Dis-Engaged.

- Brake Switch Part # (A-20GV-B7-K)

*See Install Guide for Additional Details*

### POWER CONVERTER OPTIONS

The DDAC-PDS-SYS System requires an Operating Voltage of 12-15 VDC, equipment voltage is outside of this range requires a DC to DC converter.

- Equipment Voltage of 18-60 VDC (Part # B40SR12424A)
- Equipment Voltage of 36-106 VDC (Part # B70SR12424A)

*See Install Guide for Additional Details*

## PART #: DDAC-PDS-C-SYS

Adjustable Magnetic Fields Settings; WZ 16-43 ft and DZ 13-30 ft  
System consists of:

- A. MAGNETIC FIELD GENERATOR WITH COLLISION AVOIDANCE MODULE (CAM) (DDAC-PDS-C-2)
- B. WARNING MODULE (DDAC-WM-LS)
- C. CAB SILENCER (DDAC-CAB-SI)

### TYPICAL USAGE



### MAGNETIC FIELD GENERATOR (DDAC-PDS-C-2)



#### SPECIFICATIONS

**Magnetic Field Frequency:**  
73kHz

**Radio Frequency Link:**  
916 MHz

**Voltage Input Range:**  
12-15V

**Range:**  
WZ 16-43 ft, DZ 13-30 ft  
WZ 4.88-13.11m, DZ 3.96-9.14m

**Magnetic Field Duty Cycle:**  
3%

**Current Consumption:**  
<0.3 AMP Average, 15 AMP Peak

**Power Indicator:**  
Blue LED on Housing

**Detection Indicator:**  
Orange LED on Housing

**Signal Input:**  
Available on Request

**Data Output:**  
RS-485, Baud rate 230k

**IP Rating:**  
IP66

**Operating Temperature:**  
-40F to +140F

**Power/Data Connector:**  
Deutsch DT06-8P

**Weight:**

### WARNING MODULE (DDAC-WM-LS)



#### SPECIFICATIONS

**Indicators:**  
Integrated Red LED/103dB Sounder

**Connector:**  
Deutsch DT06-8S

**Weight:**  
4.7oz/133g

**Dimensions:**  
3.81" x 2.92" x 1.03"

**Cable Conductors:**  
2 18AWG/ 4 20AWG

**Cable Length:**  
10' WM to Machine / 8' WM to MFG

**Operating Temperature:**  
-40F to +140F

3.8lbs/1.7kg

**Bluetooth I**  
RN4020

**Dimensions (Without Mount):**  
4.5" x 9" x 3.25"

**FCC ID:**  
QUI-DDAC-PDS-GEN2

**Industry Canada Cert:**  
11625A-DDACPDSCGEN2

### CAB SILENCER (DDAC-CAB-SI)



#### SPECIFICATIONS

**Magnetic Field Frequency:**  
73kHz

**Voltage Input :**  
11-15V

**Range:**  
12" - 45"

**Power Indication:**  
Orange LED visible through end cap

**Cable:**  
8' 2 conductor

**Weight:**  
0.2lbs/0.09kg

**Dimensions:**  
6" x 1" x 1"

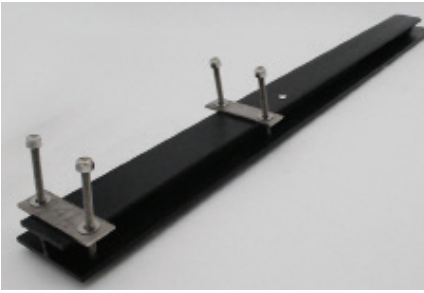
**CE:**  
CE Option Available

**Operating Temperature:**  
-40F to +140F

Adjustable Magnetic Fields  
Settings; WZ 16-43 ft and  
DZ 13-30 ft

Facilities outfitted prior to  
2017 or using HN-MFG-XL  
add "-A" to PN





## STANDARD MOUNT : MOUNTING BAR (PART # HN-MAUB)

Install the Mounting Bar with the Generator positioned over the counterbalance weight (as pictured). Use the U-Bolts that are provided to secure the Bar to the overhead guard.

*See Install Guide for Additional Details*



## BLUETOOTH WARNING MODULE (PART # DDAC-BT-WM)

The Bluetooth Warning module can be used to alert an operator of vehicles where the operator's position may change with the vehicle still in operation IE: Order-picker/Crane.

*\*Must be ordered with a system from factory*

## OPTIONAL HARDWARE IF REQUIRED

### WARNING MODULE LIGHT

Add a second Light Only Warning Module TO any DDAC System. The DDAC Cable (DDAC-Y-WMLO) is included

- Warning Module Light Only (Part # DDAC-WM-LO)

*See Install Guide for Additional Details*

### ALTERNATE MOUNTING OPTIONS

Install the Generator on top of the overhead guard. Use the U-Bolts that are provided to secure the Generator to the overhead guard.

- Top Mount (Part # HN-TP-MNT)

Install the Generator on front post of the canopy. Use the U-Bolts to secure the Generator to the frame.

- Front Mount (Part # HN-FT-MNT)

*See Install Guide for Additional Details*

### EMERGENCY BRAKE SWITCH OPTION

A Mechanical Brake Switch turns the DDAC-PDS-SYS Off/On when the Mechanical Emergency Brake is Engaged or Dis-Engaged.

- Brake Switch Part # (A-20GV-B7-K)

*See Install Guide for Additional Details*

### POWER CONVERTER OPTIONS

The DDAC-PDS-SYS System requires an Operating Voltage of 12-15 VDC, equipment voltage is outside of this range requires a DC to DC converter.

- Equipment Voltage of 18-60 VDC (Part # B40SR12424A)
- Equipment Voltage of 36-106 VDC (Part # B70SR12424A)

*See Install Guide for Additional Details*

### WEATHER SHIELDS

Weather Shields can be added to any of the Mounting Configurations. For Forklifts that Operate Outdoor or Wet in Conditions.

- Weather Shield Part # (DDAC-WS)

*See Install Guide for Additional Details*

# PART #: DDAC-PDS-SXL-SYS

System consists of:

- A. MAGNETIC FIELD GENERATOR (DDAC-PDS-SXL)
- B. WARNING MODULE (DDAC-WM-LS)
- C. CAB SILENCER (HN-CAB-SI-JAM)

## TYPICAL USAGE



## MAGNETIC FIELD GENERATOR (PDS-SXL)



### SPECIFICATIONS

**Magnetic Field Frequency:**  
73kHz

**Radio Frequency Link:**  
916 MHz

**Voltage Input Range:**  
12-26V

**Magnetic Field Duty Cycle:**  
3%

**Current Consumption:**  
<0.3 AMP Average, 15 AMP Peak

**Power Indication:**  
Blue LED on Housing

**Detection Indication:**  
Orange LED on Housing

**Signal Input:**  
Available on Request

**Data Output:**  
RS-485, Baud rate 230k

**Operating Temperature:**  
-40F to +140F

**Power/Data Connector:**  
Deutsch DTOG-8P

**Weight:**  
7.2lbs/3.2kg

**Dimensions :**  
6.0" x 13" x 4.5"

**FCC ID:**  
QUI-DDAC-PDS-SXLC

**Industry Canada Cert:**  
11625A DDACPDSSXLC

## WARNING MODULE (DDAC-WM-LS)



### SPECIFICATIONS

**Indicators:**  
Integrated Red LED/103dB Sounder

**Connector:**  
Deutsch DT06-8S

**Weight:**  
4.7oz/133g

**Dimensions:**  
3.81" x 2.92" x 1.03"

**Cable Conductors:**  
2 18AWG/ 4 20AWG

**Cable Length:**  
10' WM to Machine / 8' WM to MFG

**Operating Temperature:**  
-40F to +140F

**Dimensions (Without Mount):**  
4.5" x 9" x 3.25"

**FCC ID:**  
QUI-DDAC-PDS-GEN2

**Industry Canada Cert:**  
11625A-DDACPDSSGEN2

## CAB SILENCER (DDAC-CAB-SI-JAM)



### SPECIFICATIONS

**Magnetic Field Frequency:**  
73kHz

**Voltage Input :**  
11-15V

**Range:**  
12" - 45"

**Power Indication:**  
Orange LED visible through end cap

**Cable:**  
8' 2 conductor

**Weight:**  
0.2lbs/0.09kg

**Dimensions:**  
6" x 1" x 1"

**CE:**  
CE Option Available

**Operating Temperature:**  
-40F to +140F

**Mount:**  
Included velcro pouch

12 VDC Adjustable Magnetic Fields Settings; WZ ≈16-43 ft / 4.88-13.11m and DZ ≈13-30 ft / 3.96-9.14m

24 VDC Adjustable Magnetic Fields Settings; WZ ≈35-70 ft / 10.69-21.34m and DZ ≈25-50 ft / 7.62-15.24m





## GENERATOR HAS MAGNETICS FOR MOUNTING

Generator should be placed on metallic surface, all magnets should be securely attach.

See Install Guide for Additional Details

## OPTIONAL HARDWARE IF REQUIRED

### WARNING MODULE LIGHT

Add a second Light Only Warning Module TO any XL System.

- Warning Module Light Only (Part # DDAC-WM-L0)

See Install Guide for Additional Details

### EMERGENCY BRAKE SWITCH OPTION

A Mechanical Brake Switch turns the DDAC-PDS-SYS Off/On when the Mechanical Emergency Brake is Engaged or Dis-Engaged.

- Brake Switch Part # (A-20GV-B7-K)

See Install Guide for Additional Details

### POWER SUPPLY OPTIONS

The HN-MFG-XL-SYS System require an Operating Voltage of 24 VDC, if your machine voltage is outside of these parameters then select a DC to DC power supply.

- Machine Input Voltage of 12 VDC (Part # VHK200W-Q24-S24)
- Machine Input Voltage of 36-106 VDC (Part # B70SR12424A)

See Install Guide for Additional Details

## PART #: DDAC-PDS-SXL-C-SYS

Adjustable Magnetic Fields Settings; WZ 35-70 ft and DZ 35-43 ft  
System consists of:

- MAGNETIC FIELD GENERATOR (DDAC-PDS-SXL-C)
- WARNING MODULE (DDAC-WM-LS) see page 6
- CAB SILENCER (DDAC-CAB-SI) see page 6

### TYPICAL USAGE



## MAGNETIC FIELD GENERATOR (DDAC-PDS-SXL-C)

The magnetic field generator (SXL-C) with the addition of a CAM unit to enable vehicle to vehicle interaction.

## PERSONAL ALARM DEVICES (PAD'S) AND PAD ACCESSORY'S

The Personal Alarm Devices (PAD) will detect the presence of a pulsed magnetic fields generated by vehicles, or machinery equipped with a HIT-NOT® system.

Pad types:

- A. DDAC PAD PART # (DDAC-PAD-MC)
- B. DDAC XL PAD PART # (DDAC-PAD-XL-MC) Use in Loud Environments
- C. TYPE A PAD PART # (DDAC-PAD-A-MC) Use with - A (Before 2018)
- D. TYPE A XL PAD PART # (DDAC-PAD-A-XL-MC) Use with - A (Before 2018), Use in Loud Environments
- E. BUMP CAP PAD PART # (DDAC-BC-PAD)

### TYPICAL USAGE



### SPECIFICATIONS

**Magnetic Field Receive Frequency:**  
73kHz

**Radio Transmission Frequency :**  
916MHz

**Battery Operation Range:**  
3.5-4.25V

**Battery Life:**  
16 Hours

### DDAC PAD (DDAC-PAD)

One Piece Model (85db) (Includes Vest/Pouch and Single USB Charger and Magnetic Charging Cable)

See Install Guide for Additional Details

**Recommended Battery:**  
Battery Space LC-14500-800B  
(Replace Annually)

**Detection Indication:**  
Integrated Orange LED/Sounder

**Sounder Level:**  
85dB at 10cm

**Charge Port:**  
Custom Magnetic Charge Port

**Weight:**  
4.7oz/133g

**Dimensions:**  
3.8" x 2.9" x 1"

**FCC ID:**  
QUI-DDAC-PAD

**Industry Canada Cert:**  
11625A-DDACPAD

**Estimated Recharge Time:**  
2 Hours



### SPECIFICATIONS

**Magnetic Field Receive Frequency:**  
73kHz

**Radio Transmission Frequency :**  
916MHz

**Battery Operation Range:**  
3.5-4.25V

**Battery Life:**  
16 Hours

### DDAC PAD (DDAC-PAD-MC)

Two Piece Model (103db) (includes Vest/Pouch and Single USB Charger and Magnetic Charging Cable)

See Install Guide for Additional Details

**Recommended Battery:**  
Battery Space LC-14500-800B  
(Replace Annually)

**Detection Indication:**  
Integrated Orange LED/Sounder

**Sounder Level:**  
103dB at 24"

**Charge Port:**  
Custom Magnetic Charge Port

**Weight:**  
6.4oz/181g

**Box Dimensions:**  
3.8" x 2.9" x 1"

**Sounder Dimensions:**  
1.8" x 1.7" x 1.7"

**Cord Length:**  
20" (± 1")

**Total Length:**  
24" (± 1")

**FCC ID:**  
QUI-DDAC-PAD-MC

**Industry Canada Cert:**  
11625A-DDACPADMC

**Estimated Recharge Time:**  
2 Hours



### SPECIFICATIONS

**Magnetic Field Receive Frequency:**  
73kHz

**Radio Transmission Frequency :**  
916MHz

**Battery Operation Range:**  
3.5-4.25V

**Battery Life:**  
16 Hours

## BUMP CAP PAD PART # (BC-PAD)

*Two Piece Model (80db) Typically worn on back of hat/helmet.  
(Includes Pouch and Single USB Charger and Magnetic Charging Cable)*

*See Install Guide for Additional Details*

**Recommended Battery:**

503035 530mAL  
Lithium Rechargeable

**Detection Indication:**

Integrated Orange LED/Sounder

**Sounder Level:**

80dB at 10cm

**Weight:**

4oz/113g

**Dimensions:**

3" x 2" x 1.88"

**FCC ID:**

QUI-DDAC-PAD-CAP

**Industry Canada Cert:**

11625A-DDACPADCAP

## PREVIOUS GENERATION OF PAD



## TYPE A PAD PART # (DDAC-PAD-A-MC)

*One Piece Model (85db) (Includes Vest/Pouch and Single USB Charger and Magnetic Charging Cable)*

*See Install Guide for Additional Details*



## TYPE A XL PAD PART # (DDAC-PAD-A-XL-MC)

*Two Piece Model (103db) (includes Vest/Pouch and Single USB Charger and Magnetic Charging Cable)*

*See Install Guide for Additional Details*

# PAD ACCESSORIES



For use with DDAC-PAD, BUMP  
CAP PAD & XL PAD

## PAD CHECKOUT STATION (PART #: HN-ICS)

The HIT-NOT PAD Checkout Station verifies the functionality of the Personal Alarm Device, including sounder, magnetic field sensors, LED, and battery charge.

See Install Guide for Additional Details

### Functionality:

- Simple operation: Position PAD into the receptacle with the sounder facing down and battery door forward. Visual indicator will illuminate after several seconds.
- Visual indicator: Green light signifies the PAD is functioning correctly, Red Light Indicates PAD has failed the test, both lights illuminated indicates battery charge is insufficient.
- Input Voltage Dimensions: 12V (via included 110vac Power Supply)
- Dimensions: 14 in L x 14 in W x 10.2 in H



## PAD TEST STATION(PART #: HN-PDTEST)

The HIT-NOT PAD Checkout Station verifies the functionality of the Personal Alarm Device, including sounder, magnetic field sensors, LED, and battery charge.

See Install Guide for Additional Details

## WEARABLE OPTIONS

PAD's should always be kept in a Vest or Pouch. A Pouch or Vest is included with each PAD, please specify your choice when ordering.

### • HIT-NOT® VEST (Part # HN-VEST-(SIZE))



Custom Vest with integrated pocket. HIT-NOT Logo Vest, Class II, Tear Away Holds Standard and XL PADs (sizes S, M, L, XL, 2XL, 3XL,4XL)

### • Standard Pouch (PART # HN-PCHP)



Pouch for Standard PAD with Belt CLIP

### • XL Pouch (Part # HN-XLCHP)



Pouch for XL PAD with Belt Clip

## BATTERY & CHARGING ACCESSORIES

### • Single Charger Complete ( Part # DDAC-1P-CHG)



For DDAC-PAD, Magnetic Charge Port (Includes USB Charger and Magnetic Charging Cable)

### • 10 Port Charger (Part # DDAC-10P-CHG)



10-Port Charging Station - For DDAC-PAD, Magnetic Charge Port (ONLY)

### • Replacement Battery (Part # HN-BAT)



Replacement Li-Ion Battery with additional PCB Protection, for PADs

Recommended Battery:Battery Space LC-14500-800B

### • Replacement FMM Battery (Part # FMM-BATT)



Replacement Primary Lithium Battery NON RECHARGEABLE



## REMOTE EVENT MONITORING (REM) DATA

Remote Event Monitoring, HIT-NOT®'s data platform, provides visibility into your operation by analyzing the interactions between Mobile Equipment, Pedestrians and other HIT-NOT® devices.



### DATA RELAY (PART # DDAC-RELAY)

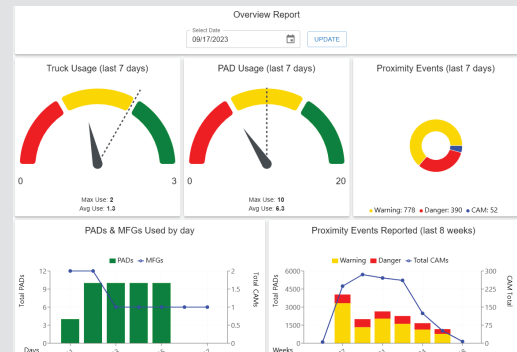
Data Relay (Data Cellular connection to Cloud)

See Install Guide for Additional Details

Hardware Required for Remote Event Monitoring:

1. MOBILE EQUIPMENT COLLECTS DATA
2. CENTRALLY LOCATED IN FACILITY, CELLULAR CONNECTION  
(Transmits Data to Cloud)
3. ACCESS TO EVENTS VIA ONLINE DASHBOARD

HIT-NOT®'s Remote Event Monitoring (REM) provides Intelligent Information, Reducing Operation Costs and Increasing Safety.



### FACILITY MARKER MODULE (PART #: FMM-EA)

Functionality:

- Provides Heat Map data & ability for Time Studies
- Battery life of 1 year +
- slim design fits under racks without taking up space

Dimensions:  
12.5" x 2" x 2.25"

FCC ID:  
QUI-FMM-EA

Industry Canada Cert:  
11625A-FMMEA



### FACILITY MARKER MODULE (PART #: FMM-T)

Functionality:

- Provides Heat Maps & ability for Time Studies
- Can be use as a battery powered exclusion zone (must be note in order w/ compatible hardware)
- Battery life of 1 year +

Dimensions:  
7.2" x 4.75" x 4"

FCC ID:  
QUI-FMM-T

Industry Canada Cert:  
11625A-FMMT

## AREA CONTROLLERS AND ACCESSORIES

Expand the HIT-NOT® System with the use of Area Controllers for congested areas, intersections, blind corners, and complicated operational situations.



TYPICAL USAGE



### SPECIFICATIONS

**Magnetic Field Transmission Frequency:**  
73kHz

**Radio Receive Frequency:**  
916MHz

**Range:**  
5-20 ft / 1.52-6.10m

### ACCESS MONITOR (PART #: HN-ACCESS)

#### Functionality:

- Generates a magnetic field that is detected by a PAD.
- PAD sends a signal to Access Monitor to allow PAD access into controlled areas.
- Used to limit access to only pedestrians with PAD's.

*Notes: When a PAD is detected in the Danger Zone, the Access Monitor will control a 12V Relay. The PAD will not receive an Alert when detected by the Access Monitor controlling lights, horns, or gates*

#### Voltage Input:

12V DC using provided 110V AC/DC powersupply

#### Power Indicator:

Blue LED on housing

#### Detection Indicator:

Orange LED on housing

#### Weight:

3.8lbs./1.7kg

#### Dimensions:

14" x 4" x 9"

#### FCC ID:

QUI-HN-MFG

#### Industry Canada Cert:

11625A-HNMFG



TYPICAL USAGE



### SPECIFICATIONS

**Magnetic Field Receive Frequency:**  
73kHz

**Radio Receive Frequency:**  
916MHz

### FACILITY MARKER MODULE (PART #: FMM-C-AM)

#### Functionality:

- Alerts workers of an approaching truck, ideal for intersections or blind corners
- Detects the presence of an oscillating magnetic field generated by a HIT-NOT® Proximity system mounted on mobile equipment.
- Provides outputs for controlling lights, gates, horns or other devices in a designated area.
- Two DC outputs for 12V signaling devices (2A max for each output)

#### Voltage Input:

12V DC using provided 110V AC/DC powersupply

#### Power Indicator:

Blue LED on Housing

#### Detection Indicator:

Orange LED on Housing

#### Weight:

1.1lbs

#### Dimensions:

4.75" x 4.75" x 4"





TYPICAL USAGE



## SPECIFICATIONS

**Magnetic Field Receive Frequency:**  
73kHz

**Radio Receive Frequency:**  
916MHz

## STRUCTURE MONITOR (PART #: FMM-C-SM)

### Functionality:

- Alerts the driver of a truck that they are approaching a structure or specified area (Can also be used for Speed Control).
- Detects the magnetic field of generator on the truck as it approaches and sends a warning alert (this alert sound is the same type of alert used for the Collision Avoidance Module), back to the truck operator.
- Ideal for permanent structures which are at risk of impact.

### Voltage Input:

12V DC using provided 110V AC/DC powersupply

### Power Indicator:

Blue LED on Housing

### Detection Indicator:

Orange LED on Housing

### Weight:

1.1lbs

### Dimensions:

4.75" x 4.75" x 4"



TYPICAL USAGE



## MECHANIZED AREA CONTROLLER A (PART #: HN-MAC-A)

### Functionality:

- A common use of the MAC-A is to separate pedestrians and equipment from occupying a controlled area at the same time.
- The MAC-A has outputs that can drive lights, horns or other devices.
- These outputs activate with the presence of PADs and Magnetic Field Generators equipped with Collision Avoidance Modules, or both.
- The MAC-A is suspended approximately 11ft above the floor, and generates an adjustable magnetic field up to 30ft wide, with lengths that can extend up to 160'.

### FCC ID:

QUI-HN-MAC

### Industry Canada Cert:

11625A-HNMAC



## RACK ALERT SYSTEM (PART #: DDAC-LZM-R)

### Functionality:

- Compatible with MFGs ordered after 1-1-24. Placed on the inside or face of a racking cross member. This device creates an alert zone detectable by the MFG-C and will provide the driver of mobile equipment with a distinct alert. A CAM is required for this device to function correctly.
- Protect your racking investment from damage, reduce product damage and reduce costly maintenance repairs or replacement.
- 12VDC via 110 wall adapter
- Length made to order up to 200' long
- Zone size Adjustable from 6" - 5'

### Dimensions:

12.5" x 2" x 2.25"

### FCC ID:

QUI-FMM-EA

### Industry Canada Cert:

11625A-FMMEA

## ACCESSORIES

### HIGH BAY PANEL LIGHTS

Panel Lights - 36000 Lumens- LED High Bay- 5000k -DC Dimmer Control Circuit

- (Part # HN-PANEL)

### RED-GREEN TRAFFIC LIGHT

Red-Green Traffic Light - 12VDC

- (Part # HN-TRAFFIC-R/G)

### HORN

HORN- 12VDC

- (Part # HN-HORN)

### FLASHING LED W/ HORN

Flashing LED Light with Horn - 12 VDC (UL Listed 87-99dBA @ 10')

- (Part # HN-HORN)

### MAGNETIC GATE LOCK KIT

Magnetic Gate Lock (consists of magnetic lock, power supply, exit switch)

- (Part # HN-MAGGATE-KIT)

### YELLOW TRAFFIC LIGHT

Yellow Traffic Light - 12VDC

- (Part # HN-TRAFFIC-Y)

### AMBER STROBE LIGHT

Strobe Light- Amber - 12VDC

- (Part # HN-STROBE-A)

### RIB RELAY

RIB Enclosed Polarized Relay, 10A, SPDT, 12VAC/VDC

- (Part # RIB12C-FA)

### REPLACEMENT POWER SUPPLY

Replacement Power Supply for (Access, Area, Structure Monitors), RMSZ, Spot Z & PDTEST

- (Part # SD165-12-U-P5)

### SOLAR KIT

Solar Kit for powering accessory devices

- (Part # HN-SOLAR-KT)

## SILENT ZONES

Establish silent zones with small silencers to prevent alarms from activating within the range of the silencer.



### SPOT Z (PART #: DDAC-SPOT-Z)

#### Functionality:

- Creates a pulsed magnetic field to stop Personal Alarm Device (PAD)s from responding to magnetic fields from nearby Magnetic Field Generators (MFGs)

HIT-NOT® Spot Z: Fields Size: 5'-12' (DDAC-PAD)

#### TYPICAL USAGE



#### SPECIFICATIONS

**Magnetic Field Frequency:**  
73kHz

**Voltage Input Range:**  
Factory Provided 110V AC Adaptor

**Power Indication:**  
Blue LED on Housing

**Weight:**  
0.5lbs/0.23kg

**Dimensions (Without Mount):**  
4" x 3" x 3"



## ROOM SILENT ZONE (PART #: DDAC-RMSZ-2)

### Functionality:

- Creates a pulsed magnetic field to stop Personal Alarm Device (PAD)s from responding to magnetic fields from nearby Magnetic Field Generators (MFGs)

*HIT-NOT® Room Silent Zone: Fields Size: 6'-28' (DDAC-PAD)*

### TYPICAL USAGE



### SPECIFICATIONS

#### Magnetic Field Frequency:

73kHz

#### Voltage Input Range:

12V DC using provided 110V AC/DC

#### Power Indication:

Blue LED on Housing

#### Weight:

3.8lbs/1.7kg

#### Dimensions (Without Mount):

14" x 4" x 9"

#### FCC ID:

QUI-DDAC-PDS-GEN2

#### Industry Canada Cert:

11625A-DDACPDSEGEN2

#### CE:

CE Option Available



## MECHANIZED AREA CONTROLLER Z (PART #: HN-MAC-Z)

### Functionality:

- The MAC-Z creates a large Silent Zone including rows of offices and work areas located next to a truck path.
- Since the MFG's magnetic field penetrates walls and other obstructions, PADs may alarm in these areas unless a Silent Zone is present.
- The MAC-Z is suspended approximately 11ft above the floor, and generates an adjustable magnetic field up to 30ft wide, with lengths that can extend up to 160'.

#### FCC ID:

QUI-HN-MAC

#### Industry Canada Cert:

11625A-HNMAC



USAGE



## WALKWAY SILENCER (PART #: DDAC-LZM-Z)

### Functionality:

- A Walkway Silencer can be used to create a long and narrow silent zone along a protected walkway to prevent alerts from passing vehicles.
- 12VDC via 110 wall adapter
- Length made to order up to 200' long
- Zone size Adjustable from 6" - ~5'

#### Dimensions:

12.5" x 2" x 2.25"

#### FCC ID:

QUI-FMM-EA

#### Industry Canada Cert:

11625A-FMMEA

## DDAC INDIVIDUAL PARTS

*Replacement parts for the DDAC systems*



### DDAC MAGNETIC FIELD GENERATOR ONLY

- (Part # DDAC-PDS)



### DDAC MAGNETIC FIELD GENERATOR ONLY W/ CAM

- (Part # DDAC-PDS-C-0)



### DDAC WARNING MODULE LIGHT & SOUND (103DB)

- (Part # DDAC-WM-LS)



### DDAC WARNING MODULE LIGHT ONLY

- (Part # DDAC-WM-LO)



### DDAC CAB SILENCER

- (Part # DDAC-CAB-SI)



### DDAC CAB SILENCER JAM

- (Part # DDAC-CAB-SI-JAM)



### DDAC CAM UPGRADE

- (Part # DDAC-CAM)



### GENERATOR MOUNTING ARM W/ U-BOLTS

- (Part # HN-MAUB)



### GENERATOR MOUNTING ARM W/ MAGNETICS

- (Part # HN-MAM)



### FRONT GENERATOR MOUNT

- (Part # HN-FT-MNT)



### TOP GENERATOR MOUNT

- (Part # HN-TP-MNT)



### WEATHER SHIELD FOR GENERATOR

- (Part # DDAC-WS)



### U-BOLT MOUNTING KIS

- (Part # HN-UBOLT-KT)



### MAGNETIC MOUNTING KIT

- (Part # HN-MAGK)



### 6 PIN GENERATOR TO 8 PIN WARNING MODULE ADAPTOR CABLE

- (Part # DDAC-6P-8P-CBL)



### 8 PIN GENERATOR TO 6 PIN WARNING MODULE ADAPTOR CABLE

- (Part # DDAC-8P-6P-CBL)





## DDAC-ADAPTER CABLE FOR LO WARNING MODULE

- (Part # DDAC-Y-A)



## 6 PIN GENERATOR TO HN-MFG ADAPTOR CABLE

- (Part # DDAC-8P-SC-CBL)



## DDAC EMI PAD

- (Part # DDAC-EMI-PAD)



## DDAC RANGE ADJUST TOOL

- (Part # HN-RANADJ)



## BRAKE SWITCH

- (Part # A-20GV-B7-K)



## POWER CONVERTOR 60VDC INPUT MAX (18V TO 60V IN - 12V OUT) 12.4V 24A 300W WITH CONNECTOR

- (Part # B40SR12424A)



## POWER CONVERTOR 106VDC INPUT MAX (36V TO 106V IN - 12V OUT) 12.4V 24A 300W WITH CONNECTOR

- (Part # B70SR12424A)



## BATTERY PACK KIT FOR MAGNETIC FIELD GENERATOR, 12V-COMPLETE

- (Part # DDAC-PDS-12VPACK-KIT)



## DEMO KIT COMPLETE WITH TRAVEL CASE (DEALERS ONLY)

- (Part # DDAC-DEMO-KIT)



## REPLACEMENT FMM BATTERY

- (Part # FMM-BATT)

## SXL INDIVIDUAL PARTS

Replacement parts for the SXL systems.



## MAGNETIC FIELD GENERATOR SXL ONLY PART

- (Part # HN-MFG-SXL)



## MAGNETIC FIELD GENERATOR SXL-C ONLY

- (Part # HHN-MFG-SXL-C)



## WARNING MODULE LIGHT & SOUND (103DB) XL / TYPE A

- (Part # HN-WM-LS)



## WARNING MODULE LIGHT ONLY

- (Part # HN-WM-LO)



## DDAC CAB SILENCER JAM

- (Part # DDAC-CAB-SI-JAM)



## POWER CABLE 6, FOR XL GENERATOR

- (Part # HN-PC6)



## BATTERY PACK KIT FOR MAGNETIC FIELD GENERATOR, 24V-COMPLETE

- (Part # DDAC-PDS-24VPACK-KIT)



## BRAKE SWITCH

- (Part # A-20GV-B7-K)



## POWER CONVERTER 12V IN / 24V OUT - 200W

- (Part # VHK200W-Q24-S24)



## POWER CONVERTOR 106VDC INPUT MAX (36V TO 106V IN - 24V OUT) 24V 12.4A 300W WITH CONNECTOR

- (Part # B70SR24125CC)

# TYPE A INDIVIDUAL PARTS

Replacement parts for the Type A systems (Previous Generation)



## TYPE A MAGNETIC FIELD GENERATOR ONLY

- (Part # DDAC-PDS-A)



## TYPE A MAGNETIC FIELD GENERATOR ONLY W/ CAM

- (Part # DDAC-PDS-C-A-0)



## WARNING MODULE LIGHT & SOUND (103DB) XL / TYPE A

- (Part # HN-WM-LS)



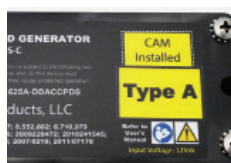
## WARNING MODULE LIGHT ONLY

- (Part # HN-WM-L0)



## DDAC CAB SILENCER

- (Part # DDAC-CAB-SI)



## TYPE A CAM UPGRADE

- (Part # DDAC-A-CAM)







Frederick Mobile Instrumentation  
1769 Jeff Road Huntsville, AL 35806